

Chip Wood, Pruned & Leafy Branches and even Vegetables with **ohashi** chippers

# Green Shark Wood Chipper

# GS92G

## NEW FEATURES

- \* Max. chipping dia. - 9cm. Compact wood chipper.
- \* Expert chipping of wood and bamboo!
- \* Suitable for volume reduction of pruned branches.
- \* Make use of chips as compost, mulching etc.



Max. diameter

9.0  
cm

Max. capacity

1.5  
m<sup>3</sup>/h

Max. output

9.0  
HP

Patented



Bamboo chipping is also OK!



Able to load on a light truck



Long High Shooter



Chips of around 5 mm

# Wood Chipper GS92G <Compact chipper for use in orchard and garden>

## Max. chipping dia. 9 cm

### Wood



Chips are widely used for compost, mulching etc.

### Bamboo



※Regular screen 20x40 mm

## Easy maintenance

### Upper Rotor



No special devices required to open rotor upper unit or hopper. Designed for easy daily check and replacement of blades.

### Hopper



## Safety design

### Emergency Stop Button



Prevention from feeding accidents by stopping operation with "Emergency Stop Button".

### Pressure prevention



Clutch lever automatically stops when undue force is applied at the reverse operation.

### Lever Stopper



Lever Stopper locks the clutch lever to prevent the lever canceled by branches etc.

### Backward feeding



When materials are clogged, release materials by pushing the lever to turn the roller backward.

## Various options

### Long High Shooter



Suitable for letting out in a light truck or in a bulk bag.  
※Not available with screen.

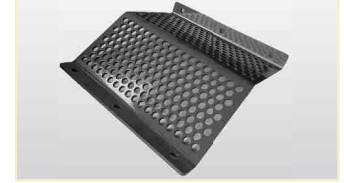


### Shredder knife



Chipping efficiency raises and finer chips are produced.

### Screen ø 10 mm



Capable to adjust chip size and to produce uniform chips with a screen. Replacement is easy.  
※Photo: Regular screen (20×40mm)

## Specifications

Factor		Description	Factor		Description
Total	Product / Model name	Wood Chipper Shredder/ GS92G	Chipping	Drive system	Belt clutch, V belt
	LxWxH	1470×630×1250 mm		Max. chipping dia.	90 mm
	Weight	250 kg		Output angle	Variable
Power	Engine	Subaru EX27 Gasoline Engine		Chute size	465×320 mm
	Max. output	9.0 (6.6) ps (kw)		Outlet height	650 mm
	Fuel	Unleaded Automobile Gasoline		Drive	Steering type
	Fuel tank	6.0 L	Drive type		Self-propelled crawler type
	Fuel consumption	2.5 L/h	Speed		F1: 1.3 km/ h, F2: 2.7 km/ h R: 1.6 km/ h
	Starting system	Recoil Starter			

\* Specifications are subject to change without notice.



**ohashi inc.**

401 SAKIMURA CHIYODA KANZAKI  
SAGA JAPAN 842-0065  
TEL +81-952-44-3135  
FAX +81-952-44-3137  
E-MAIL global@ohashi-inc.com  
WEB www.ohashi-inc.com