

Chip Wood • Leafy Branches • Straw and even Vegetables with **ohashi** Chippers

 **Mobile  
Chippers**

# ES131GH

## FEATURES

- \* Maximum power in mobile, compact, light weight body
- \* For composts, mulching, making pellets or bio-energy
- \* Hydraulically powered automatic infeed rollers
- \* Made in Japan - Japanese quality and reliability



Max. diameter  
**13**  
cm

Max. output  
**13**  
Gross Estimate HP

Weight  
**390**  
kg



Only 73cm wide!



Leafy branches OK



No stress micro-computer



Able to load on a light truck or trailer

# Wood Chipper ES131GH Basic performance

## Max. chipping dia. 13cm

### Wood



### Leafy branches



ES131GH can chip wood and leafy branches of 13cm max. Leaves are also well processed. Chips can be used for composts, mulching, making pellets or bio-energy.

## Two Stage Process

### Chipper knife



Turn logs into chips with the powerful 2 blade rotating chipper knife.

### Shredder knives



Increase chipping efficiency  
※ 8 pcs / unit

## Fan forced Shooter

### Dispatch chips into truck or flexi bag



Fan forced shooter dispatches chips fast and directly to a truck or a flexi bag.

## Dispatch above or below

### Shooter



Change the dispatch angle or direction at your convenience.

### Low dispatch unit



When chipping in places where a shooter may cause obstructions, like an orchard, disable the shooter and dispatch chips from below.

## Easy Maintenance

### Rotor cover



Knife inspection and maintenance.

### Hopper



Oil inspection and engine maintenance.

### Blower cover



Fan blower inspection and maintenance.

### Hour meter



Equipped with hour meter.

## Fuel-saving mode

### Feed mode switch



Easy switch between "Power mode" and "Eco mode". Small branches of max. dia. 5cm are chipped with "Eco mode", and more fuel saving can be achieved.

## Easy to load on truck

### Loading and unloading



Self-propelled crawler and compact, light weight body enable you to load onto or unload from a truck easily.



# Wood Chipper ES131GH Basic performance

## Automatic No Stress Control

### Hydraulic motor



An automatic hydraulic No Stress control system, communicates with the feed roller ensuring stable and efficient feeding of materials.

### Micro computer



Micro-computer between the feed roller and engine reduces engine loading stress and prevents damage.

## Safety Design

### Feed roller safety bar



Allow users to stop the feed roller in an emergency and if necessary without using their hands.

### Brake handle



The brake handle is gripped to transport the vehicle. When released the parking brake will be activated automatically.

## Advanced functions

### Feed switch



It is easy to take out any clogged materials with the reverse feeding by just turning the feed switch.

### Hoisting



Reinforced robust body allows for stable hoisting while attaching rope to the machine at only one place!

### Recoil starter



Recoil starter cord also attached. No dead battery issues!

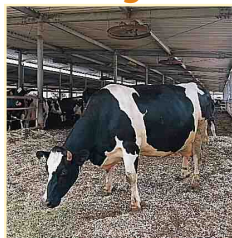
### Wide hopper



Wide hopper for easy feeding of thick leafy branches.

## Chip Applications

### Bedding



### Compost



### Pathways



### Pellets



### Mulching



### Heat Water



## Options

### Flat blade <For chipping grass and bark>



Attach flat blade to the feed roller to avoid clogging on sharp edges.

\* Grass containing more water, should be discharged via the low dispatch unit because chipped grass might clog up the shooter.



### Flexi bag



Easy to collect chips and eliminate mess.

### Vacuum collector



Processed chips are efficiently collected and packed without raising dust.

# Recommended Options

## Adjust the chip size

### ES131GHB - Adjust the chip size



Choose the chip size to suit your needs with ES131GHB's Flow Controller. Allows you to speed up the infeed to produce larger chips or slow down to produce very small chips for pelletizing, bio-energy and fertilizer. Use in combination with screens.

※ES131GHB is equipped with flow controller and one more screen (5mm or 8mm holed) plus standard screen (40mm holed).

### Flow controller



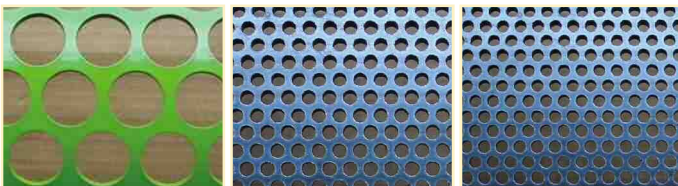
The processing speed is adjustable by turning the flow controller. Allows you to adjust the chip size.

### Screen sizes - For uniform sized chips

40mm holed screen

8mm holed screen

5mm holed screen



To adjust chip size and to produce uniform sized chips just change the screen.

※Different hole sized screens can be made on request.

### Chip sizes

40mm holed screen

8mm holed screen

5mm holed screen



Different chip sizes suit different purposes. Choose the hole size of screen based on your needs.

## ES131GH / ES131GHB Specifications

| Factor |                      | Description                                        | Factor   |                   | Description                            |                             |
|--------|----------------------|----------------------------------------------------|----------|-------------------|----------------------------------------|-----------------------------|
| Total  | Product / Model name | Wood Chipper ES131GH / ES131GHB                    | Chipping | Feeding system    | Automatic hydraulic No Stress control  |                             |
|        | L × W × H (mm)       | In use - 2180x730x1500                             |          | Drive system      | Belt clutch, V belt                    |                             |
|        |                      | In transport - 1655x730x1610                       |          | Max.chipping dia. | 130 mm                                 |                             |
| Power  | Weight               | 390 kg                                             |          | Blade             | Chipper knife 2pcs / Counter knife 1pc |                             |
|        | Engine               | Honda GX390                                        |          |                   | Shredder knife 8pcs                    |                             |
|        | Max. output          | 13.0 HP (Gross Estimate)<br>11.7 HP / 8.7 kw (Net) |          | Drive             | Infeed dimensions                      | 200x131 mm                  |
|        |                      |                                                    |          |                   | Fuel                                   | Unleaded gasoline           |
|        | Fuel tank            | 6.1 L                                              |          |                   | Steering type                          | Side Clutch                 |
|        | Fuel consumption     | 2.6 L / h                                          |          |                   | Drive type                             | Self-propelled crawler type |
| Output | Output type          | Fan forced shooter                                 | Speed    |                   | F1 : 1.2 km/h F2 : 2.5 km/h            |                             |
|        | Height of shooter    | 1370 mm                                            |          |                   | R : 1.4 km/h                           |                             |
|        | Output shooter angle | Variable in 270°                                   |          |                   |                                        |                             |

\*Specifications are subject to change without notice.



**ohashi inc.**

401 SAKIMURA CHIYODA KANZAKI  
SAGA JAPAN 842-0065  
EUROPE TEL +44-20-3286-2252  
JAPAN TEL +81-952-44-3135  
E-MAIL [global@ohashi-inc.com](mailto:global@ohashi-inc.com)  
WEB [www.ohashi-inc.com](http://www.ohashi-inc.com)