

Wood Chipper

GS123G·GB

A compact chipper that can be
used in lots of different places



12.5

Max.
chipping dia.
12.5
cm

Max.
capacity

2.8 m³/h

Fuel

2.5 L/h

Standard
Screen

Loading
Truck

Light
truck

Max.
output

13.0 HP

Weight

345 kg

20×40
mm

Hoisting

1 point

Basic performance

Max. chipping diameter 12.5cm

Wood



Bamboo



The chips can be used for a wide range of applications such as soil conditioner, compost, mulching etc.

Extended output guide

Output to container



Folding type



With the extended output guide, collect smoothly through the output to the container. Easy transportation with the folding type.

Easy maintenance

Rotor cover



Hopper



Hour meter



No tools necessary to open rotor cover and hopper. Designed for easy daily check and knives exchange. The hour meter assists with regular servicing and maintenance.

Safety design

Emergency stop button



Prevent feeding accidents by stopping engine with "Emergency Engine Stop Button" .

Pressure prevention function



When in reverse, slight pressure on the brake lever halts the machine reducing the risk of accidents.

Energy-saving

Feed mode switch



Switch easily between "Power Mode" and "Eco Mode" . Branches of 5cm max. dia. can be chipped at low speed (2800rpm) in "Eco Mode" .

Other features

- Micro-computer between the feed roller and engine reduces engine loading stress and prevents damage.
- An automatic hydraulic No Stress control system, communicates with the feed roller ensuring stable and efficient feeding of materials.
- Wide hopper for easy feeding of thick leafy branches.
- Reinforced robust body allows stable hoisting while attaching rope to the machine at only one place.



Option

To discharge chips transversely

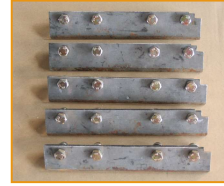
Side shooter



Conveniently discharge chips transversely (right hand side).
※Not available with screen.

For chipping grass

Flat blade



Attach flat blade to the feed roller to avoid clogging on sharp edges.

For chipping waste vegetables

Top loading hopper



Attach the top loading hopper for easy chipping of waste vegetables. Remove screen and chip easily clogging materials while using the top loading hopper.

For collecting small chips

Vacuum collector BMY150XN50



- Attaching the optional vacuum collector allows processed chips to be efficiently collected and packed without raising dust.
- Collecting in a plastic bag is convenient for the lactic fermentation of bamboo powder.
- The collector is in casters for transportation.

For uniform sized chips

Shredder knife



Increase chipping efficiency and produce very fine chips.
※8 pcs/unit
※GS123GB comes standard with shredder knives.



To adjust chip size and to produce uniform sized chips just change the screen.
10, 12, 15, 18, 20, 40, 43 mm

Processed chips



Different chip sizes suit different purposes. Choose the shredder knife and the hole size of screen based on your needs. To produce very small chips for bamboo fertilizer, we recommend the GS123GB with 5mm / 8mm screen.

Let out into a flexi bag

Long high shooter



Suitable for letting out into a light truck or in a flexi bag. Also designed for removing blocking chips from the output.
※Not available with screen.

Scattering chips

High shooter



Able to scatter chips forward and let out into a light truck bed. More efficient, by surrounding the route with sheets of plywood or cardboard.
※Not available with screen.

Wood chipper specifications

Reduce volume **GS123G** For tiny chips **GS123GB**

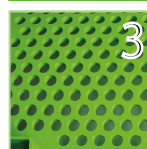
GS123G



1 Flow controller



2 Shredder knife
(8 pcs / unit)



3 Screen
(5mm or 8mm hole)



GS123GB



Difference between GS123G & GS123GB

「GS123G」 is the standard machine.

By adding 3 options, it becomes 「GS123GB」

1. The flow controller can adjust the processing speed
2. Shredder knife helps make uniform chips
3. By fitting a smaller holded screen, the chip size can be reduced
(Hole size: 5mm and / or 8mm)

※The standard 20×40mm holed screen is included in each model.

Wood 5mm screen



Bamboo 5mm screen



Fine chips can be used for bedding and then reused as compost after fermentation with animal dung.

Other specifications

Economy Motor Type

GS123M-MB

Built-in
order



L×W×H	1390×750×1260mm
Weight	280 kg
Motor	Hitachi 3-phase motor 200V 60A
Max. output	10.2(7.5) ps(kw)

Main Specifications

	Item	Description		Item	Description
Total	Product / Model	Wood Chipper / GS123G, GS123GB	Chipping	Blade	Chipper knife x2psc / Counter knife x1pc Shredder knife x8pcs (GS123GB only)
	L×W×H	1620×730×1290 mm		Infeed dimensions	560×330 mm
	Weight	345 kg		Drive system	Belt clutch, V belt
	Max. chipping dia.	125 mm (soft wood)		Feeding system	Automatic hydraulic No Stress control
	Max. capacity	2.8 m ³ /h (20×40mm screen) GS123GB(5mm screen) approx.120kg/h GS123GB(8mm screen)approx. 200kg/h	Output	Output typr	Air conveying type
Power	Engine	Mitsubishi GB400PE		Output height	740mm
	Max. output	13.0 (9.5) ps(kw) ※gross		Output angle	Variable
	Fuel	Automobile unleaded gasoline		Extended output guide	Variable
	Fuel tank	6.0 L	Drive	Steering type	Side clutch
	Fuel consumption	2.5 L/ h		Drive type	Self-propelled crawler type
	Starting system	Cell / Recoil starter		Speed	F1 : 1.2 km/h F2 : 2.5 km/h R 1.4 km/h

* Specifications are subject to change without notice.