

# Wood Chipper GS95G

This light model can chip  
wood up to 9cm diameter



9

Max. chipping dia.  
**9**  
cm

Max. capacity

**1.7** m<sup>3</sup>/h

Fuel

**2.4** L/h

Standard Screen

Loading Truck

Light truck

Max. output

**8.6** HP

Weight

**250** kg

**20×40**  
mm

Hoisting

-

# Basic performance

## Max. chipping dia. 9 cm

### Wood



### Bamboo



Chips are widely used for compost, mulching etc.

※Regular screen 20×40 mm

## Easy maintenance

### Rotor cover



### Hopper



No special devices required to open the rotor cover and the hopper. Designed for easy daily check and replacement of blades.

## Safety design

### Emergency stop button



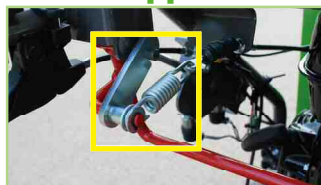
Prevent feeding accidents by stopping engine with "Emergency Engine Stop Button".

### Pressure prevention function



When in reverse, slight pressure on the brake lever halts the machine reducing the risk of accidents.

### Lever Stopper



Lever Stopper locks the clutch lever to prevent the lever canceled by branches etc.

### Backward feeding



When materials are clogged, release materials by pushing the lever to turn the roller backward.

## Option

### Long high shooter



Suitable and convenient to discharge chips into a light truck or into a bulkbag.

※ Not available with screen.

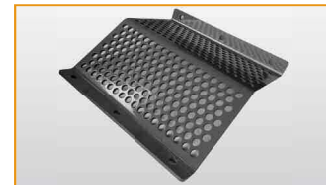


### Shredder knife



Chipping efficiency is increased and finer chips are produced.

### Screen 10-20-30-40mm



Chipping efficiency is increased and finer chips are produced.

※ Regular screen 20×40mm

## Main Specifications

	Item	Description		Item	Description
Total	Product / Model	Wood Chipper / GS95G	Chipping	Blade	Chipper knife x2pcs / Counter knife x1pc
	L×W×H	1470×630×1250 mm		Infeed dimensions	465×320 mm
	Weight	250 kg		Drive system	Tension clutch, V belt
	Max. chipping dia.	90 mm (soft wood)		Feeding system	Brake functioned electromagnetic clutch system with automatic No Stress control
	Max. capacity	1.7 m <sup>3</sup> /h (Regular screen 20×40mm)		Output type	Air conveying type
Power	Engine	Honda GX270 Gasoline Engine	Drive	Output height	650 mm
	Max. output	8.6 (6.3) ps(kw)		Output angle	Variable
	Fuel	Automobile unleaded gasoline		Steering type	Side clutch
	Fuel tank	5.3 L		Drive type	Self-propelled crawler type
	Fuel consumption	2.4 L/h		Speed	F1: 1.3 km/h, F2: 2.7 km/h, R: 1.6 km/h
	Starting system	Recoil Starter			

\* Specifications are subject to change without notice.